



Royal Forth Yacht Club

Sailing Instructions 2015

(Racing and Cruising)

List of Contents

INTRODUCTION	3
SAILING CALENDAR	4
CLUB OPEN EVENTS	4
CLUB RACES	4
CALENDAR ON A PAGE	5
SAILING INSTRUCTIONS - RACING	6
RFYC SAILING INSTRUCTIONS – CLUB RACES 2015	6
EVENING POINTS, SATURDAY SERIES.....	8
RACE INSTRUCTIONS	9
EVENING POINTS EARLY/LATE SERIES, SATURDAY SERIES	9
OPENING REGATTA / SAT SERIES 1 - 3	9
THE JUBILEE CUP	9
THE NEILSON PLATE TROPHY RACE /SAT SERIES 10	9
SINGLE HANDED RACE.....	9
CRAWFORD CUP.....	10
LADIES RACE – YACHTS & DINGHIES	10
THE PENNEL TROPHY (STERN CHASE)	10
THE WEST CUP (JOINT PASSAGE RACE 5).....	11
THE ROYAL EASTERN REGATTA / SAT SERIES 13-15	11
ECSW FEEDER RACES.....	12
THE CORONATION CUP (STERN CHASE).....	12
THE CROMBIE CUP	12
AUTUMN SERIES	12
CRUISING EVENTS	13
SEASON CHALLENGE	13
COURSES	15
MID-FIRTH COURSES	15
A COURSES.....	16
B COURSES.....	16
BREAKWATER COURSES	17
MARKS	18
COURSE CHART.....	19
RACING MARKS DISTANCE CHART.....	20

INTRODUCTION

The Sailing Committee would like to invite all club members to take part in this season's sailing activities: **club racing; cruising; open race events**. These Sailing Instructions deal with club racing and open events. Cruising event details will be announced separately by poster and email.

Once again there will be racing on most Saturdays of the season, plus occasional Sundays. The popular Evening and Saturday Series are open to FCYC members to encourage larger fleet sizes.

Points to note:

- **Cruising:** See the Season's Challenge Page 13
- **Evening Points:** the tides and this season are such that in order to maintain at least a seven race series some races will be held on a Friday evening.
- **Saturday Series:** some cup races have been added to count for the overall result. There are now 15 races with 4 discards allowed.
- **Classes:** there will be class series results over the combined season's series races: Evening, Saturday and Autumn Points. This will require 5 or more club boats to have raced for the class(es) during the season.
- **Average points** for boats carrying out race duties will be awarded for a race series result on application to the Sailing Secretary..

Sailing Calendar: A short version of the sailing calendar is included in this handbook. The full calendar, including tide times and boatman hours, plus notes of other local events, is published in the RFYC Club Handbook and also on the RFYC web site.

Race duties: As always, the club relies on members to be race officers, committee boat drivers and safety boat drivers plus assistants to facilitate racing. The **DutyMan** online system will be used to administer allocation and swapping of duties. **If you are unable to fulfil your duty it is your responsibility to arrange a swap.** If you have any problems with a duty please let a member of the Sailing Committee know as soon as possible.

Safety - Club Rules: Competitors are reminded that the decision to race and thus safety whilst on the water is the responsibility of the skipper. **The following safety guidelines apply to all RFYC events:**

Keelboats - FYCA Safety Regulations for Yachts: See <http://www.fyca.org.uk/Data/fycasafetyregsiss3.pdf>
NB in particular all RFYC yachts must carry an alternative means of propulsion.

Dinghies – RFYC Dinghy Racing Safety Procedures <http://www.rfyc.org/> - [Downloads tab](#)

- There must be a safety boat on the water with two crew on board for dinghy races/training

Safety RIBs are not provided by the club at other times or for other events. RIBs may be present for keelboat racing to assist the Race Officer (mark laying etc) but are not intended to provide safety cover. The presence of RIBs does not diminish the responsibilities of the yacht skipper.

Happy Sailing!

RFYC Sailing Committee:

Charles Morton (Rear Commodore – Sailing)
Graham Mitchell (Sailing Secretary)
Simon Peakman – Training & 707 Class
Chris Howden - RIBs
John Maclaren – Results & H Boat Class
Hillary Sillitto – Sailing Activity on RFYC Website
Cian (EUSC)

Sailing Calendar

Club Open Events

Event	Date	Class
Edinburgh Regatta	Sat 13 th - Sun 14 th June	Keelboats
May Island Race (FOG)	Sat 30 th May	Keelboats – Forth Inshore Group
Anstruther Express	Sat 30 th May	Keelboats – Forth Inshore Group
Orkney Race	Thurs 18 May	Keelboats – offshore race
Festival Series	Wed 5 th July-Fri 7 th August	Dinghies, Keelboats
One design weekend	Sat 26 th - Sun 27 th September	One Design (eg 707, H Boat, Dragon)

Club Races

Event	Type	Dates/Schedule	Class	SIs
Opening regatta	Club regatta	Sat 2 nd May	Dinghies, Keelboats	Page 9
Evening Points - Early	Series - 7 races	May - June, Wednesdays, Thursdays & Fridays	Keelboat	Page 9
Saturday Series	Series - 15 races	May – September, (2 races per race day + cup races)	Keelboats	Page 9
Cruise in company	Cruising event	See page 13	All	tba
Jubilee Cup	JPR with FCYC	Sat 23 rd May	Keelboats	Page 9
Neilson Plate	Average lap	Sat 20 th June	Keelboats	Page 9
Single-handed race	Solo helm	Sat 27 th June	Keelboats	Page 9
Evening Points - Late	Series - 7 races	July - Sept, Wednesdays, Thursdays & Fridays	Keelboat	Page 9
Crawford Cup	Passage Race	Sun 19 th July	Keelboats	Page 10
Ladies race	Female helm	Sat 25 th July	Dinghies & Keelboats	Page 10
Pennel trophy	Stern chase	Sat 1 st August	Keelboats	Page 10
West Cup	JPR with RFYC	Sat 8 th August	Keelboats	Page 11
Royal Eastern Regatta	Club regatta	Sat 15 th August	Keelboats	Page 11
ECSW Feeder Race	Passage Race	Wed 19 th August	Keelboats	tba
ECSW Feeder Race	Stern Chase	Fri 21 st August	Keelboats	tba
Coronation Cup	Stern chase	Sat 29 th August	Keelboats	Page 12
Crombie cup	Special course	Sat 12 th September	Keelboats	Page 12
Autumn Series	Race series - 12 races	Sat 10 th , 17 th , 24 th , 31 st Oct; (2 races per race day)	Keelboats <=1014	Page 12

Open Events, ECSW Feeder Races, Cruises in Company - separate race notices and instructions will be issued. See Notice Board and web site for details.

Evening Points Series & Saturday Series are open to FCYC members.

Evening Points Series: there are 3 Friday evening races.

Calendar on a page

Most other local events and RFYC training duties are not included – see RFYC website and handbook.

RFYC Sailing Calendar 2015

Date		Boatman		HW	Keel Boat Events		Dinghy Events		Other Open Events
Start	End								
					note: JPR - Joint Passage Race	Start		Start	and ..RFYC Open Events
Apr	18 Sat	11:00	18:00	15:22	LIFT IN				
May	2 Sat	11:00	17:30	14:35	Opening Regatta/SatSeries123	12:00	Opening Regatta		PEYC RS Dinghy Regatta (Sat/Sun)
May	6 Wed	13:30	20:00	17:03					
May	7 Thu	14:30	21:00	17:42	Evening Points Early 1/7	19:00			
May	8 Fri	15:00	21:00	18:23	Evening Points Early 2/7	19:00			
May	16 Sat	10:00	17:00	14:08	Sat Series 4-5 / JPR 1	12:00			FCC Fife Regatta
May	17 Sun	11:00	18:00	15:00	CIC - Cruise in Company 1/5	11:00			FCC Fife Regatta
May	21 Thu	14:00	21:00	17:51	Evening Points Early 3/7	19:00			
May	22 Fri	15:00	21:00	18:31	Evening Points Early 4/7	19:00			
May	23 Sat	16:00	21:00	19:14	JPR 2 - Jubilee Cup	17:00			
May	24 Sun	09:00	11:00	07:22					
		16:00	21:00	20:03					
May	26 Tue	10:00	13:00	09:09			Training on Water	18:30	Helgoland Week
				22:07					Helgoland Week
May	27 Wed	10:00	14:00	10:17					Helgoland Week
May	28 Thu	10:00	15:00	11:22					Helgoland Week
May	29 Fri	10:00	16:00	12:19					Helgoland Week
May	30 Sat	10:00	17:00	13:12	RFYC May Isle FIG Div-1	10:00			ASC Muster
					Anstruther Express FIG Div-2	10:05			May Isle FIG Div-1 / CBC Anstruther Express FIG Div-2
					Sat Series 6-7	11:00			
Jun	6 Sat	14:30	21:00	18:17	Sat Series 8-9	15:30			ELYC Regatta
Jun	10 Wed	09:00	13:00	22:12	Evening Points Early 5/7	19:00			
Jun	13 Sat	09:00	16:00	12:45	Edinburgh Regatta				FCC Club Regatta / FCYC & RFYC Edinburgh Regatta
Jun	14 Sun	10:00	17:00	13:45	Edinburgh Regatta				FCC Club Regatta / FCYC & RFYC Edinburgh Regatta
Jun	18 Thu	14:00	20:00	16:52	RFYC Orkney Race	19:00			RFYC Orkney Race
Jun	20 Sat	14:00	21:00	18:09	Neilson Plate/SatSeries 10	16:00			
Jun	21 Sun	15:00	21:00	18:49	Cruise in Company 2/5	15:30			
Jun	24 Wed	17:00	21:00	21:08	Evening Points Early 6/7	19:00			
Jun	25 Thu	18:00	21:00	22:09	Evening Points Early 7/7	19:00			
Jun	27 Sat	09:00	15:00	11:26	Single Handed	10:00			LBSC Dinghy Regatta
Jul	8 Wed	17:00	21:00	20:40	Evening Points Late 1/7	19:00			
Jul	9 Thu	18:00	21:00	21:43	Evening Points Late 2/7	19:00			
Jul	11 Sat	09:00	15:00	11:15	JPR 3	tba by FCYC			
Jul	12 Sun	09:00	16:00	12:26	Cruise in Company 3/5	10:00			BSC Mazzoni FIG Div1 & Costello FIG Div2 Trophies
Jul	15 Wed	13:00	18:00	15:11	Family Cruise/Sailing	11:00			
Jul	16 Thu	13:00	19:00	15:53	Family Cruise/Sailing	12:00			
Jul	17 Fri	13:00	20:00	16:33	Family Cruise/Sailing	13:00			
Jul	18 Sat	13:00	20:00	17:10	Sat Series 11-12	14:30			
					JPR4	14:00			
Jul	19 Sun	14:00	21:00	17:44	Crawford Cup	15:00			
Jul	22 Wed	16:00	21:00	19:32	Evening Points Late 3/7	19:00			
Jul	23 Thu	16:00	21:00	20:15	Evening Points Late 4/7	19:00			
Jul	25 Sat	09:00	13:00	09:24	Ladies Race	10:00	Ladies Race	10:05	
Aug	1 Sat	13:00	19:00	16:25	Pennel Trophy	14:00			Start - West Highland Yachting Week (West Coast)
Aug	5 Wed	15:30	21:00	19:24	RFYC Festival Series	19:00	RFYC Festival Series	19:00	RFYC Festival Series
Aug	6 Thu	16:00	21:00	20:13	RFYC Festival Series	19:00	RFYC Festival Series	19:00	RFYC Festival Series
Aug	7 Fri	17:00	21:00	21:11	RFYC Festival Series	19:00	RFYC Festival Series	19:00	RFYC Festival Series
Aug	8 Sat	09:00	13:00	09:37	JPR5 (West Cup)	10:30			
Aug	15 Sat	13:00	19:00	16:11	Royal Eastern Regatta/ SatSeries 13-15	14:00			ABC Regatta
Aug	16 Sun	13:00	20:00	16:45			Cadet Trophy	tba	
Aug	19 Wed	15:00	21:00	18:19	ECSW Feeder Race	17:00			
Aug	21 Fri	16:00	21:00	19:28	Cruise iC 4/5 ECSW Feeder Stern Chase	17:00			FYCA East Coast Sailing Week - Port Edgar Marina
Aug	29 Sat	12:00	18:00	15:20	Coronation Cup	13:00			CBC Dinghy Regatta
Sep	2 Wed	15:00	20:30	18:17	Evening Points Late 5/7	19:00			
Sep	3 Thu	15:00	20:30	18:58	Evening Points Late 6/7	19:00			
Sep	4 Fri	16:00	20:30	19:43	Evening Points Late 7/7	19:00			
Sep	12 Sat	11:30	18:00	15:12	Crombie Cup	12:30			
Sep	13 Sun	12:00	13:00	15:46	Cruise in Company 5/5	12:30			
Sep	26 Sat	10:00	17:00	14:10	RFYC One design weekend	11:00			RFYC One design weekend / FCYC Bass Rock Race FIG Div 1&2
Sep	27 Sun	11:00	18:00	15:01	RFYC One design weekend	12:00			RFYC One design weekend
Oct	4 Sun	09:00	11:30	07:44					Start - PEYC Autumn-Winter Series)
Oct	10 Sat	10:00	17:30	14:08	Autumn Series 1-2	11:00			
Oct	17 Sat	14:00	18:00	17:52	Autumn Series 3-4	15:00			
Oct	24 Sat	10:00	16:00	12:49	Autumn Series 4-6	11:00			
Oct	31 Sat	13:00	16:30	17:08	Autumn Series 7-8	14:00			

Sailing Instructions - Racing

RFYC Sailing Instructions – Club Races 2015

Issued by the RFYC Sailing Committee in April 2015 & replacing all previous versions.

1. Rules

Racing will be sailed under the current RRS2014-2016, the Prescriptions of the RYA and Class Rules, except as amended by these Sailing Instructions.

2. Responsibility and Insurance

The safety of a boat and its entire management, including insurance, shall be the inescapable responsibility of the owner/skipper. RFYC shall not be liable for any loss, damage, death or personal injury, howsoever caused, to the owner, his skipper or crew as a result of their taking part in any race. Every owner warrants the suitability of his boat for racing. Boats shall carry insurance protection for third party and Passenger liabilities of not less than £2.000.000.

3. Notices to Competitors

Notices to competitors will be posted on the official notice board located within the entrance of RFYC.

4. Changes to Sailing Instructions

Any changes to the Sailing Instructions will be posted at least 1 hour before the advertised start time of the day's racing, except that any changes to the schedule of races will be posted by 2000 hours on the day before it will take effect.

5. Signals made ashore

5.1 Signals made ashore will be displayed at the main mast of RFYC.

5.2 When flag AP is displayed ashore, '1 minute' is replaced with 'not less than 30 minutes' in the explanation of race signal AP.

5.3 When flag Y is displayed ashore, Rule 40 applies at all times while afloat. This changes Rule 40.

6. Schedule of Races

6.1 Dates and start times of races: refer to Race Calendar and Race Instructions. (NB. the warning signal is 5 minutes before the advertised start time)

6.2 When there has been a long postponement or when more than one race (or sequence of races, for two or more classes) will be held on the same day, the warning signal for the first race and each succeeding race will be made as soon as practicable. To alert boats that a race or sequence of races will begin soon, an orange flag may be displayed (with one sound) for at least four minutes before the warning signal is displayed. Boats should note however that the normal procedure is to start the next race as soon as practicable after the end of the previous without displaying the orange flag.

7. Class Flags & Classes

Class flags will normally be as follows:

Class

All-Class Handicap (combined start Keelboats & Dinghies)
Keelboat Fast Handicap (1014 and below)
Keelboat Slow Handicap (1015 and above)
General Keelboat Handicap
General Dinghy Handicap

Flag

Numeral Pennant 1
Numeral Pennant 1
Numeral Pennant 3
Numeral Pennant 3
Numeral Pennant 4

8 Handicaps

8.1 Keelboats: Handicaps will be as per the Forth Yacht Clubs Handicap List.

8.2 Dinghies: Will use handicaps as published in the current YR2, RYA Portsmouth Yardstick Scheme.

8.3 Any boat that does not have a current FYCA or Portsmouth Handicap will be allocated a temporary handicap by the Sailing Committee.

8.4 White Sail allowance: On application to the Sailing Committee a 'White Sail' allowance of 4% may be given (keelboats only). This can be applied for at the start of the season or on an individual race basis, provided that **7 days** notice is given. Once this allowance is given for a season, yachts wishing to use a spinnaker or cruising chute must give notice in writing at least seven days prior to the event.

9 Racing Marks & Courses

Marks and courses to be used are defined in the List of Courses and Marks or the individual Race Instructions. The course to be used will be displayed on the committee boat.

10 The Start

10.1 Races will be started using RRS 26 with the warning signal given 5 minutes before the starting signal.

10.2 Boats whose warning signal has not been made shall avoid the starting area.

10.3 A boat starting later than 15 minutes after her starting signal will be scored Did Not Start.

10.4 Unless stated otherwise in the individual Race Instructions the Fast and Slow Handicap keelboats will start at the same time. Class flags for both Fast and Slow will be hoisted at the same time to allow the race for one class to be shortened if necessary.

11 Start Line

The start line will be between a staff displaying a yellow flag on a buoy and the start (first) mark indicated on the List of Courses.

12 Finishing Line

The finishing line will be between an orange buoy and the finish (last) mark indicated on the List of Courses (unless altered by a shortened course).

13 Time Limits

If one boat in a class sails the course as required by RRS 28.2 and finishes within the time limit, the time limit will be extended for all other boats in that class. This alters RRS 35. Time limits and extensions are included in the Race Instructions.

14 Protests

15.1 Protests shall be lodged in accordance with RRS 60 and 61. They shall be in writing (forms available from RFYC office) and be received within 1 hours of the last boat finishing the last race of the day.

15.2 A breach of instruction 10.2 will not be grounds for a protest by a boat. This changes rule 60.1 (a). Penalties for breaches of this instruction may be less than disqualification if the protest committee so decides.

16 Scoring

16.1 3 or more races require to be completed to constitute a series.

16.2 Series results will be calculated as follows:

<i>Races Completed in Series</i>	<i>Discards</i>
3.....	0
4 or 5.....	1
6 or more.....	2

17 Safety (see also instruction 2 & 5.3)

17.1 Unless otherwise defined in the Race Instructions, boats (keelboats) shall comply with the FYCA Safety Regulations, Category 4R (Issue 3). Full copies of these regulations are available from the club website or online at www.fyca.org.uk. A copy will also be displayed on the notice board. NB: in certain races boats shall comply with Category 4 (see race instructions).

17.2 Boats that retire from a race shall inform the race committee as soon as possible.

17.3 **Dinghies:** While racing dinghy crews must conform to RRS 40. Flag Y may not be displayed. I.e. Personal Flotation Device must be worn at all times whilst racing.

18 Disclaimer of Liability

18.1 Nothing done by the organisers can reduce the responsibility of the boat nor will it make the organisers responsible for any loss, damage, death or personal injury, however it may have occurred, as a result of the boat taking part in the racing. The organisers encompass

everyone helping to run the race and the event, and include the organising authority, the race committee, the race officer, patrol boats and beach-masters.

18.2 The provision of patrol and or rescue boats does not relieve any boat of her responsibility.

19 Equipment & Measurement Checks

A boat or its equipment may be inspected at any time for compliance with class rules and the sailing instructions.

20 Interpretation

Should there be any discrepancy between these instructions and the individual race instructions, the latter will take precedence.

21 Penalty System

RRS 44.1 and 44.2 are changed so that only one turn, including one tack and one gybe, is required.

Evening Points, Saturday Series

These Rules apply only to RFYC/FCYC joint races.

1 Eligibility and Entry

These series are open to all club members' boats from either the Royal Forth Yacht Club or Forth Corinthian Yacht Club. There is no requirement to register for either series and there are no entry fees.

2 Schedule of Races and Courses

2.1 The dates of the races are listed in each club's Race Programme.

2.2 The scheduled time of the start signal for each race is listed in the Sailing/Race Instructions.

2.3 For Evening and Saturday Points races, RFYC courses will be used.

3 Handicaps

3.1 Passage Races: Club Handicaps allocated by RFYC and FCYC will be used.

Evening Points and Saturday Series: FYCA Handicaps shall be used.

3.2 The clubs sailing committees reserve the right to adjust any handicap at any time.

3.3 White Sail Allowance - On declaration in writing to the Sailing Committee at least **7 days** prior to the start of the race, a boat will be given a 4% allowance of her FYCA handicap added to her Club handicap for the duration of the declared race provided this allowance has not already been allowed within the boats current handicap. Such boats must not fly spinnakers, cruising chutes or more than one headsail at any one time. Headsails may be poled out.

4 Scoring

4.1 3 races are required to be completed to constitute a series.

4.2 Series results will be calculated as follows:

Evening and Saturday Points

Races Completed Discards

3.....0	8 to 123
4 or 51	12 to 154
6 to 8.....2	

4.3 Average points for the series will be awarded to the race officer on duty. An application should be made in writing/email to the Sailing Secretary.

5 Prizes

Prizes for each series will be as follows:

Number of Entrants Prizes

2.....1

3 - 5.....2

5 or more.....3

1st Overall Passage Series: The Joint Series Trophy - Historic picture of Granton.

1st Overall Evening Points: Early and Late Series Fast & Slow Handicap Trophies

1st Overall Saturday Points: Saturday Series Fast & Slow Handicap Trophies

Race Instructions

Unless stated otherwise the RFYC Sailing Instructions apply – see page 6.

Evening Points Early/Late Series, Saturday Series

Entries: Keelboats - Fast = 1014 & below, Slow = 1015 & above
Start time: See RFYC Sailing Calendar page 5.
There will be 1 race per day – Evening Pts; 2 races per day – Saturday series.
Course: Breakwater ; Sat Series also includes Cup Courses
Time Limit: 90 minutes from actual start of race with a 30-minute extension.

Opening Regatta / Sat Series 1 - 3

Saturday 2 May **12:00/12:05 - 3 Races** **HW 14.35**

Entries: 1. Keelboats - Fast = 1014 & below & Slow = 1015 & above;
2. Dinghies
Start time: Races 2 & 3 will start as soon as possible after the preceding race.
Course: Mid-Firth Courses. A or B courses can be used.
The Course Board will show A or B and the course number.
Time Limit: 60 minutes from actual start of race with a 15-minute extension

The Jubilee Cup

Saturday 23 May **Start 17.00** **HW 19.14**

Entries: Keelboats of RFYC and FCYC
Course: Course 1: h-c-r-ox-wg-p-LA-z-h(finish)
Course 2: H-Z-la-P-WG-OX-R-C-H(finish)
The Course Board will indicate course 1 or 2.
CAPITAL LETTERS to PORT - small letters to starboard
Time Limit: 180 minutes from actual start of race with a 60-minute extension.

The Neilson Plate Trophy Race /Sat Series 10

Saturday 20 June **Start 16.00** **HW 18.09**

Entries: Keelboats
Starting Line & Finishing Line: The starting line will be between a staff displaying a yellow flag on a buoy and Mark I. All boats **must** pass through this line on the completion of each round.
Course: Mid-Firth Courses: B – Average Lap
Finishing procedure: **Average Lap Time:** When flag “S” is displayed from the Committee Boat, each boat will complete the lap and finish at the end of that lap.
The results will be calculated by dividing the corrected time by the number of laps completed by the boat.
Time Limit: 120 minutes from actual start of race with a 30-minute extension.

Single Handed Race

Saturday 27 June **Start 10:00** **HW 11.26**

Entries: Keelboats

Boats wishing to enter must complete and submit an entry form, available at the Notice Board, at least 90 minutes before the advertised start time of the race.

- Course: Breakwater Courses.
- Time Limit: 120 minutes from actual start of race with a 30-minute extension.
- Restrictions Use of self-steering gear operated by power or wind-vane is prohibited. Boats may be fitted with adjustable tiller lines
- Safety: Personal Flotation Devices **shall** be worn at all times.

Crawford Cup

Sunday 19 July **Start 15.00** **HW 17.44**

Entries: Keelboats

Course: Course 1: Start (h) – C16 - sd - inchcolm – mortimer's deep no2(red channel buoy) - LA - z – Finish (h)
Course 2: Start (h) – C16 - sd - A – c10 - LA - z – Finish (h)
The Course Board will indicate course 1 or 2.
CAPITAL LETTERS to PORT - small letters to starboard

Finishing Line: The finishing line will be between mark H and the black and white marks on the corner of the disused race box on the NE corner of the East Breakwater.
All skippers are to record their start and finish time by their own watch and record the names of the boats finishing ahead and behind them.
A declaration form must be completed and returned within one hour of the last boat finishing. Forms are available at the Notice Board.

Time Limit: The absolute time limit is 20.00 hours. If no boat finishes within this time limit the Race Officer may declare a result using times taken at a mark of the course.

Boats should record their own time of passing any mark of the course. For the avoidance of doubt, the time should be taken when the bow crosses an imaginary line at 90° to the direct course from the previous mark, not when the mark has been rounded. At rounding marks the distance from the mark should be no greater than 100 metres when the time is taken.

If no boat finishes within the time limit the race shall be abandoned. However, a result may be obtained using times taken at a rounding mark. This alters RRS32.

Ladies Race – Yachts & Dinghies

Saturday 25 July **Start 10.00/10.05** **HW 09.24**

Entries: Keelboats & Dinghies

These races are restricted to boats helmed by a female.

Course: Breakwater Courses

NB: All boats will sail the Keelboat Course.

Time Limit: 120 minutes from actual start of race with a 30-minute extension.

The Pennel Trophy (stern chase)

Saturday 1 August **First Start: 14.00** **HW 16.25**

Entries: Boats wishing to enter must sign the entry list at the Notice Board at least two hours prior to the advertised start time.

- Entries: Keelboats
- Starting Line: The starting line will be between a staff displaying a yellow flag on a buoy and the first mark of the course, as displayed on the Notice Board.
- Starting Procedure: The first start will follow the starting procedure in accordance with Rule 26: subsequent starts will be signalled by displaying flag "P" (with no sound signal) one minute before the starting signal.
At the starting signal, flag "P" will be removed with one sound (or dipped if the next start is one minute later). At the starting signal of the last boat in the sequence, Flag "P" will be removed with one sound signal.
Start times for individual entries will be displayed on the Notice Board not less than one hour before the first start.
- Course: The course to be sailed will be displayed on the Notice Board not less than one hour before the first start.
- Finishing Line: The finish line will be between an orange buoy and the last mark of the course, as displayed on the Notice Board.
- Time Limit: The absolute time limit is 180 minutes from the first start.

The West Cup (Joint Passage Race 5)

Saturday 8 August **Start 10.30** **HW 09.37 / 22.18**

- Entries: Keelboats (FCYC Wilson Cup)
- Course: Start (H) - c7 - ik - nc - LA - z - h - c16 - p - LA - z – Finish (h)
CAPITAL LETTERS to PORT - small letters to starboard
- Finishing Line: The finishing line will be between mark H and the black and white marks on the corner of the disused race box on the NE corner of the East Breakwater.
All skippers are to record their start and finish time by their own watch and record the names of the boats finishing ahead and behind them.
A declaration form must be completed and returned within one hour of the last boat finishing. Forms are available at the Notice Board.
- Time Limit: The absolute time limit is 20.00 hours. If no boat finishes within this time limit the Race Officer may declare a result using times taken at a mark of the course.

Boats should record their own time of passing any mark of the course. For the avoidance of doubt, the time should be taken when the bow crosses an imaginary line at 90° to the direct course from the previous mark, not when the mark has been rounded. At rounding marks the distance from the mark should be no greater than 100 metres when the time is taken.

If no boat finishes within the time limit the race shall be abandoned. However, a result may be obtained using times taken at a rounding mark. This alters RRS32.

The Royal Eastern Regatta / Sat Series 13-15

Saturday 15 August **Start 14.00 - 3 Races** **HW 16.11**

- Entries: Keelboats - Fast = 1014 & below, Slow = 1015 & above
- Course: See Mid-Firth Courses: A – Set Laps
- Time Limit: 60 minutes from actual start of race with a 15-minute extension.
- Races: Races two & three will start as soon as possible after the preceding race.

ECSW Feeder Races

Wednesday 19 August	Start 17.00	HW 18.19
Friday 21 August	Start 17.00	HW 19:28

Separate race notices and instructions will be issued. See Notice Board and web site for details nearer the time..

The Coronation Cup (stern chase)

Saturday 29 August	Start 13.00	HW 15.20
---------------------------	--------------------	-----------------

- Entries: Keelboats
Boats wishing to enter must sign the entry list at the Notice Board at least two hours prior to the advertised start time.
- Starting Line: The starting line will be between a staff displaying a yellow flag on a buoy and the first mark of the course, as displayed on the Notice Board.
- Starting Procedure: The first start will follow the starting procedure in accordance with Rule 26. Subsequent starts will be signalled by displaying flag "P" (with no sound signal) one minute before the starting signal. At the starting signal, flag "P" will be removed with one sound (or dipped if the next start is one minute later). At the starting signal of the last boat in the sequence, Flag "P" will be removed with one sound signal.
Start times for individual entries will be displayed on the Notice Board not less than one hour before the first start.
- Course: The course to be sailed will be displayed on the Notice Board not less than one hour before the first start.
- Finishing Line: The finishing line will be between a staff displaying a blue flag at the north end of the Pharos Pier and a purpose laid mark (a description of this mark will be displayed on the Notice Board prior to the start of the race).
- Time Limit: 120 minutes from actual start of race with a 30-minute extension.

The Crombie Cup

Saturday 12 September	Start 12.30	HW 15.12
------------------------------	--------------------	-----------------

- Entries: Keelboats
- Course: c - r - O - M - B - i - e - r - O - M - B - i - e (finish)
CAPITAL LETTERS to PORT - small letters to starboard
- Time Limit: 150 minutes from actual start of race with a 60-minute extension.

Autumn Series

Saturday 10, 17, 24, 31 October – see calendar

- Entries: Keelboats - 1014 & below
- Start time: 2 races per day.
Race 2 will start as soon as possible after the preceding race.
- Course: Breakwater Courses
- Time Limit: 90 minutes from actual start of race with a 30-minute extension.

Cruising Events

The monthly Cruise in Company events are shown in the 'calendar on a page' and as per custom details of each cruise will be announced either nearer the date or when skippers meet at the clubhouse on the day. The events are:

Date	Event	Time	HW
Sun 17 May	Cruise in Company 1	11:00	15:00
Sun 21 June	Cruise in Company 2	15:30	18:49
Sun 12 July	Cruise in Company 3	10:00	12:26
Wed – Fri 15-17 July	Family Cruise	11:00 – 13:00	
Fri 21 August	Cruise in Company 4 - Sternchase to Port Edgar for East Coast Sailing Festival weekend	17:00	19:28
Sun 13 September	Cruise in Company 5	12:30	15:46

These cruises are aimed at encouraging club skippers to venture out in company, with the prospect of anchoring or preferably berthing in a harbour together to allow social interchange beyond the usual wave from a passing yacht. There might be the chance of a stern chase back to Granton and a nibble and drink in the clubhouse if the organiser can be persuaded to organise!!

There is a family cruise event earmarked for the July holiday period where it is hoped that weather conditions will be conducive for a sail to a harbour or anchorage with an overnight stay or two. Details will emerge nearer the date.

Season Challenge

In recognition of the popularity of Top Gear for 'petrol-heads' there will be a competition for the fastest rounding of the islands in the Forth Estuary by RFYC yachts during the season. The islands are:

- Inch Garvie
- Inchcolm via Mortimers Deep buoyed channel & passing west of Ch Buoy 15
- Inchmickery
- Inchkeith via a rounding south of the Little Herwit Green Buoy in the Narrow Deep.
- Isle of May stopping overnight if required by taking times at a near point off the island lights

Rules:

1. Elapse times for a passage around an island should be taken starting and finishing at the Granton harbour mouth. Skippers can make as many attempts at a passage as they wish.
2. White sails should be used throughout the passage i.e. spinnakers or cruising chutes are not allowed.
3. A record of the passage should be recorded on the forms available at the club notice board including: Island; name of yacht; skipper; date; start time; finish time; weather conditions – in particular wind direction and strength. In the case of the Isle of May more detail of the passage should be recorded and especially where any stop overnight is involved.

4. The record of a passage must be submitted to the Sailing Secretary within one week of the island rounding.
5. The elapse time will be corrected for the yacht handicap. 'Fast' yachts of handicap 1014 and below will sail under their normal handicap. Slow yachts will use white sail handicaps.
6. A skipper whose boat does not appear on the club handicap list should apply to the Sailing Secretary for a handicap.
7. Resultant passage times will be displayed in a league table format a la Top Gear and its presentation of lap times of celebrities.
8. The Season Challenge will be open from 1 May until 30 September.

Yacht skippers are open to choosing the most favourable wind and tide conditions for their passages.

Prizes may be awarded for this challenge if sufficient yachts compete.

COURSES

Mid-Firth courses

A courses: Set Laps (See course chart on the next page)

App. Wind Direction	Course No.	Mark1	Mark 2	Course (order in which marks are to be passed)
North	1	N	I	Start at I-N-I-N-I-N-finish at I
N. West	2	M	I	Start at I-M-I-M-I-M-finish at I
West	3	A	I	Start at I-A-I-A-I-A-finish at I
S. West	4	R	I	Start at I-R-I-R-I-R-finish at I
South	5	B	I	Start at I-B-I-B-I-B-finish at I
S. East	6	C	I	Start at I-C-I-C-I-C-finish at I
East	7	U	I	Start at I-U-I-U-I-U-finish at I
N. East	8	O	I	Start at I-O-I-O-I-O-finish at I

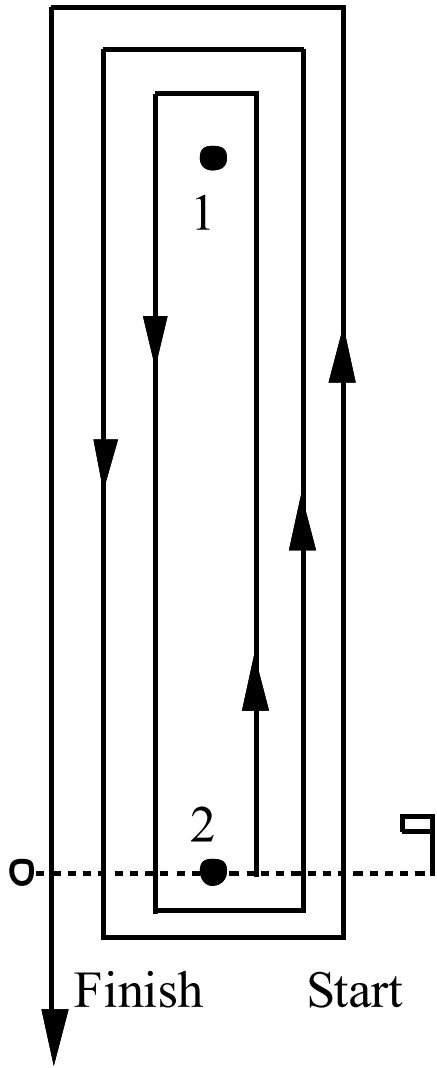
B courses: Average Lap (See course chart on the next page)

When used for Average Lap

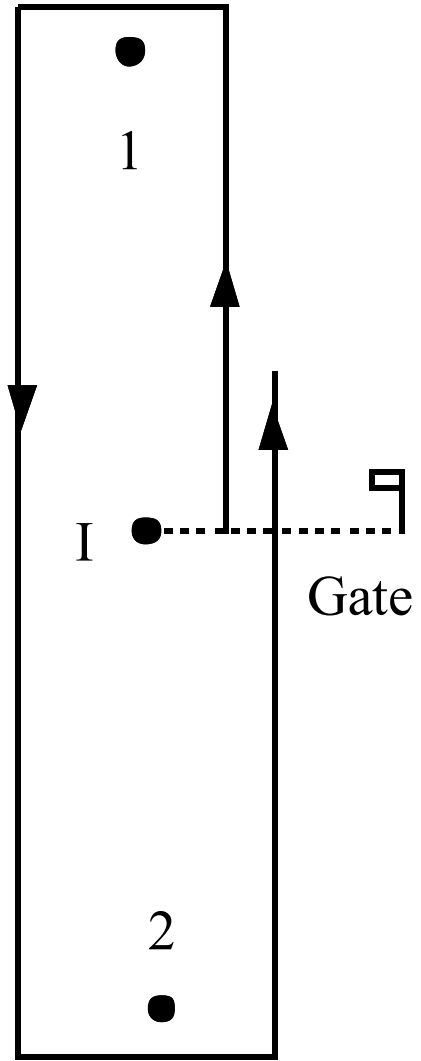
The Gate is between mark I and a staff displaying a yellow flag on a buoy. On completion of each lap, boats must pass between these marks leaving mark I to port and the staff displaying a yellow flag on a buoy to starboard. When flag 'S' is displayed from the committee boat, each boat will complete the lap and finish at the end of that lap. The results will be calculated by dividing the corrected time by the number of laps completed by the boat.

App. Wind Direction	Course No.	Mark1	Mark 2	Course (order in which marks are to be passed)
North	1	N	B	Start at I-N-B-Gate at I
N. West	2	M	C	Start at I-M-C-Gate at I
West	3	A	U	Start at I-A-U-Gate at I
S. West	4	R	O	Start at I-R-O-Gate at I
South	5	B	N	Start at I-B-N-Gate at I
S. East	6	C	M	Start at I-C-M-Gate at I
East	7	U	A	Start at I-U-A-Gate at I
N. East	8	O	R	Start at I-O-R-Gate at I

A Courses



B Courses



Breakwater Courses

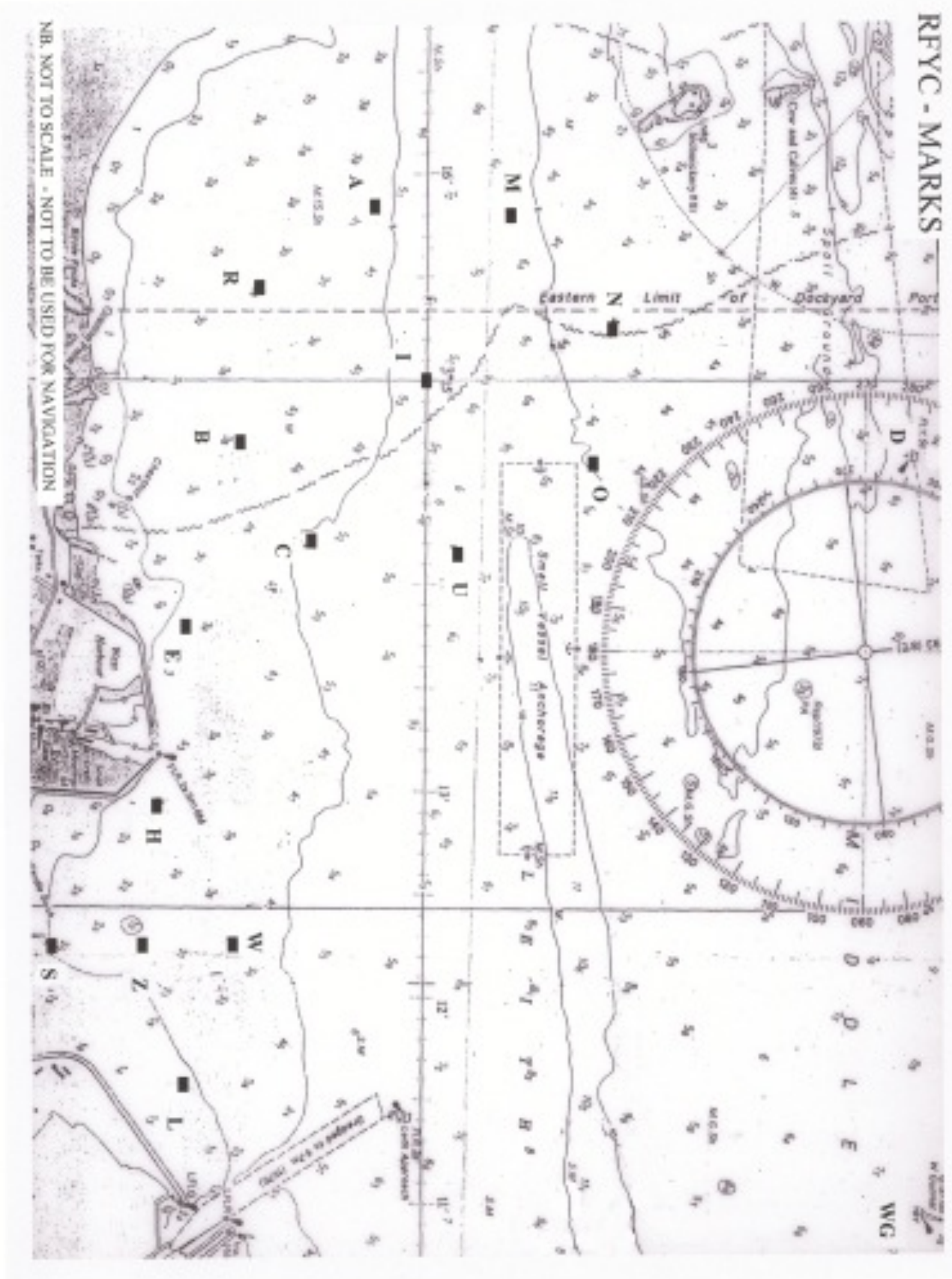
CAPITAL LETTERS to PORT, small letters to starboard

App. Wind Direction	Colour	No.	Course	Distance
North	Blue	1	H-U-C-S-W-H-S-W (finish)	4.7
N. West	Blue	2	h-b-u-w-s-h-e-z-h-e-z-h (finish)	7.5
West	Blue	3	h-b-w-l-e-l-h-e-z-h (finish)	7.9
S. West	Blue	4	h-e-l-s-w-l-s-z-l-s(finish)	4.7
South	Blue	5	Z-s-e-w-s-h-w-s-w-s (finish)	4.9
S. East	Blue	6	H-S-L-W-E-H-S-W-H-S-Z-H(finish)	5.3
East	Blue	7	h-l-s-e-h-l-e-h-z-e-h (finish)	7.0
N. East	Blue	8	h-w-l-s-w-l-z-h-w-z-h (finish)	4.1
North	Red	1	H-U-S-L-W-H-S-W-S-W (finish)	5.9
N. West	Red	2	H-C-S-H-E-S-Z-H-S-Z-H (finish)	5.9
West	Red	3	H-B-S-L-H-S-L-H-L-H (finish)	7.0
S. West	Red	4	Z-E-S-L-W-E-L-W-H-L-W-H (finish)	7.3
South	Red	5	H-S-W-S-W-S-W-S (finish)	3.4
S. East	Red	6	H-S-C-E-H-S-Z-E-H-Z-E-H (finish)	6.6
East	Red	7	E-L-W-E-H-L-E-H-Z-E-H (finish)	7.3
N. East	Red	8	H-W-C-E-H-W-E-H-W-E-H (finish)	6.1
North	White	1	e-u-S-W-S-W (finish)	3.8
N. West	White	2	e-u-z-s-h-z-s-h-z-s-h (finish)	5.0
West	White	3	H-E-S-Z-H-Z-H-Z-H (finish)	3.8
S. West	White	4	h-e-w-h-w-h-w-h (finish)	3.5
South	White	5	E-S-W-S-W-S-Z-S (finish)	3.3
S. East	White	6	H-S-W-H-S-Z-H-S-H (finish)	3.5
East	White	7	H-L-W-H-L-H-Z-H (finish)	3.9
N. East	White	8	h-w-l-s-h-w-z-h-w-h (finish)	3.9
East		11	h-l-s-w-s-h-l-s-w-s-h (finish)	5.4
West		12	H-S-W-S-L-H-S-W-S-L-H (finish)	5.4

Marks

Mark	Description	Approximate Position	
A	Almond RFYC race mark	55 59.850N	3 15.850W
B	Birnie RFYC race mark	55 59.510N	3 14.720W
C	Caroline RFYC race mark	55 59.750N	3 14.220W
C7	Channel Buoy No.7 (Blae Rock)	56 02.800N	3 10.970W
C10	Channel Buoy No.10	56 02.070N	3 13.320W
C16	Channel Buoy No.16	56 00.870N	3 19.600W
E	East RFYC race mark	55 59.400N	3 13.810W
H	Harbour RFYC race mark	55 59.300N	3 12.930W
HW	Herwit Buoy	56 01.050N	3 06.520W
I	Inner RFYC race mark	56 00.000N	3 15.000W
IK	Inchkeith Island (Lighthouse)	56 02.010N	3 08.170W
IM	Inchmickery (SE end)	56 00.650N	3 16.300W
L	Leith RFYC race mark	55 59.350N	3 11.580W
LA	Leith Approach Buoy	55 59.950N	3 11.510W
M	Mickery RFYC race mark	56 00.220N	3 15.780W
N	New RFYC race mark	56 00.480N	3 15.250W
NC	North Craig Buoy	56 01.02N	3 03.520W
O	Outer RFYC race mark	56 00.460N	3 14.600W
OX	Oxcars (Lighthouse)	56 01.360N	3 16.840W
P	Pallas Buoy	56 01.500N	3 09.300W
Q	FCYC race mark	55 59.200N	3 12.899W
R	Royston RFYC race mark	55 59.550N	3 15.440W
S	Starbank RFYC race mark	55 59.010N	3 12.240W
SD	St David's Light (Fl G 5s)	56 01.370N	3 22.290W
U	Upper RFYC race mark	56 00.120N	3 14.150W
W	Wardie RFYC race mark	55 59.497N	3 12.252W
WG	West Gunnet Buoy	56 01.340N	3 10.970W
Z	Zulu RFYC race mark	55 59.220N	3 12.240W

Course Chart



Racing Marks Distance Chart

All distances are in miles and are approximate

	A	B	C	E	H	I	L	M	N	O	R	S	U	W	Z
A	-	.71	.92	1.23	1.72	.50	2.44	.39	.73	.94	.37	2.18	.99	2.04	2.11
B	.71	-	.38	.52	1.02	.51	1.76	.93	1.03	.96	.41	1.47	.70	1.38	1.14
C	.92	.38	-	.42	.85	.50	1.53	.99	.93	.74	.71	1.33	.37	1.13	1.23
E	1.23	.52	.42	-	.50	.90	1.25	1.37	1.35	1.1	.92	.96	.75	.99	.90
H	1.72	1.02	.85	.50	-	1.35	.76	1.84	1.75	1.49	1.43	.48	1.07	.43	.40
I	.50	.51	.50	.90	1.35	-	2.02	.49	.50	.51	.51	1.83	.49	1.62	1.73
L	2.44	1.76	1.53	1.25	.76	2.02	-	2.50	2.34	2.02	2.17	.50	1.63	.40	.39
M	.39	.93	.99	1.37	1.84	.49	2.50	-	.39	.70	.70	2.32	.92	2.10	2.22
N	.73	1.03	.93	1.35	1.75	.50	2.34	.39	-	.36	.94	2.24	.71	1.94	2.10
O	.94	.96	.74	1.15	1.49	.51	2.02	.70	.36	-	1.02	1.96	.42	1.63	1.81
R	.37	.41	.71	.92	1.43	.51	2.17	.70	.94	1.02	-	1.87	.92	1.79	1.82
S	2.18	1.47	1.33	.96	.48	1.83	.50	2.32	2.24	1.96	1.87	-	1.54	.49	.21
U	.99	.70	.37	.75	1.07	.49	1.63	.92	.71	.42	.92	1.54	-	1.23	1.40
W	2.04	1.38	1.13	.88	.43	1.62	.40	21.0	1.94	1.63	1.79	.49	1.23	-	.28
Z	2.11	1.14	1.23	.90	.40	1.73	.39	2.22	2.10	1.81	1.82	.21	1.40	.28	-